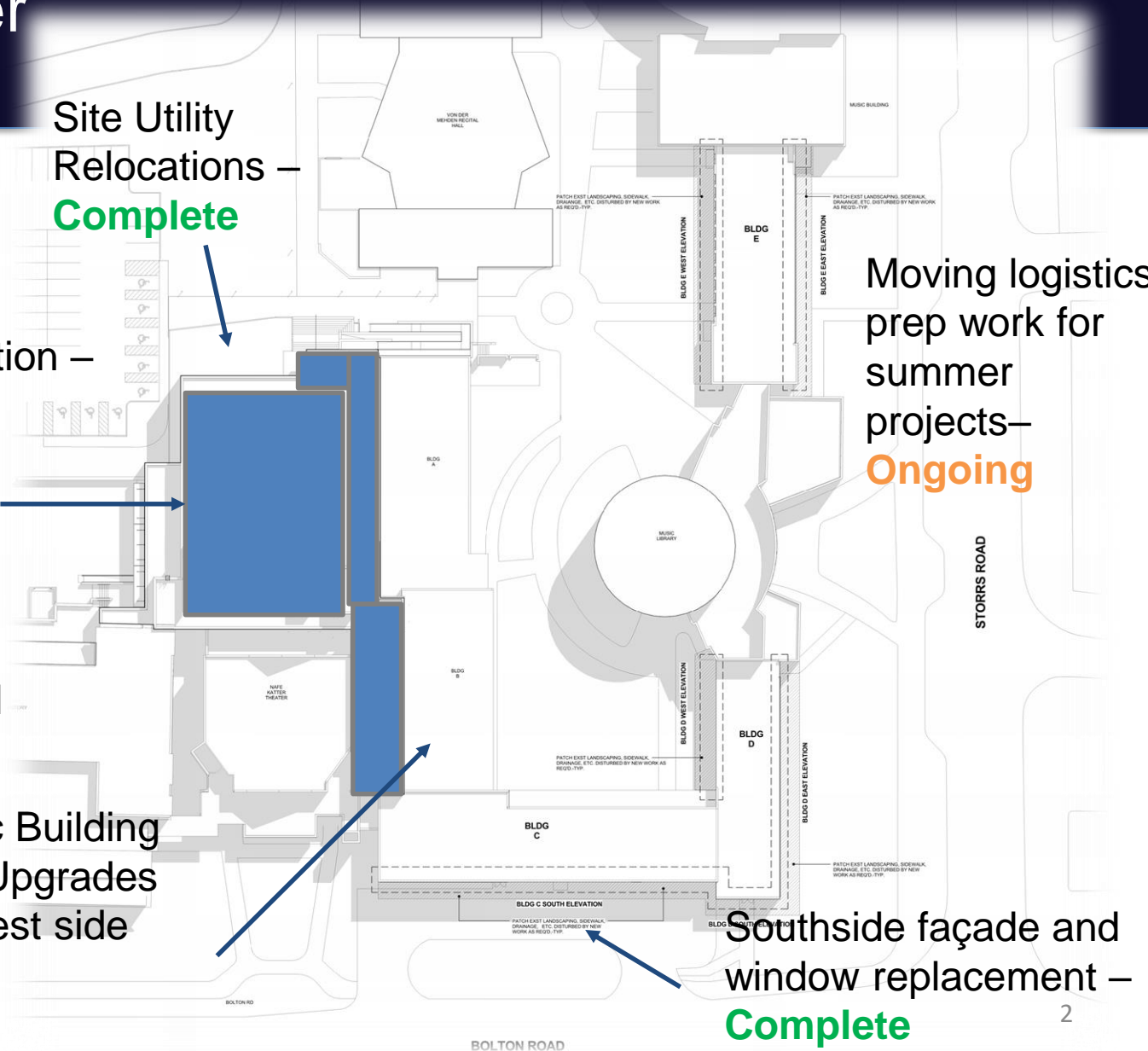


# SFA Capital Project Facility Updates

Status as of 04/29/19

# SFA Capital Project - Current Status

## Spring Semester



Site Utility Relocations – **Complete**

Production Facility Addition – **Ongoing:**

- Structural steel
- Masonry walls
- Y columns installed
- Loading Dock Doors
- Roofing
- Mechanical/Electrical Rough-in

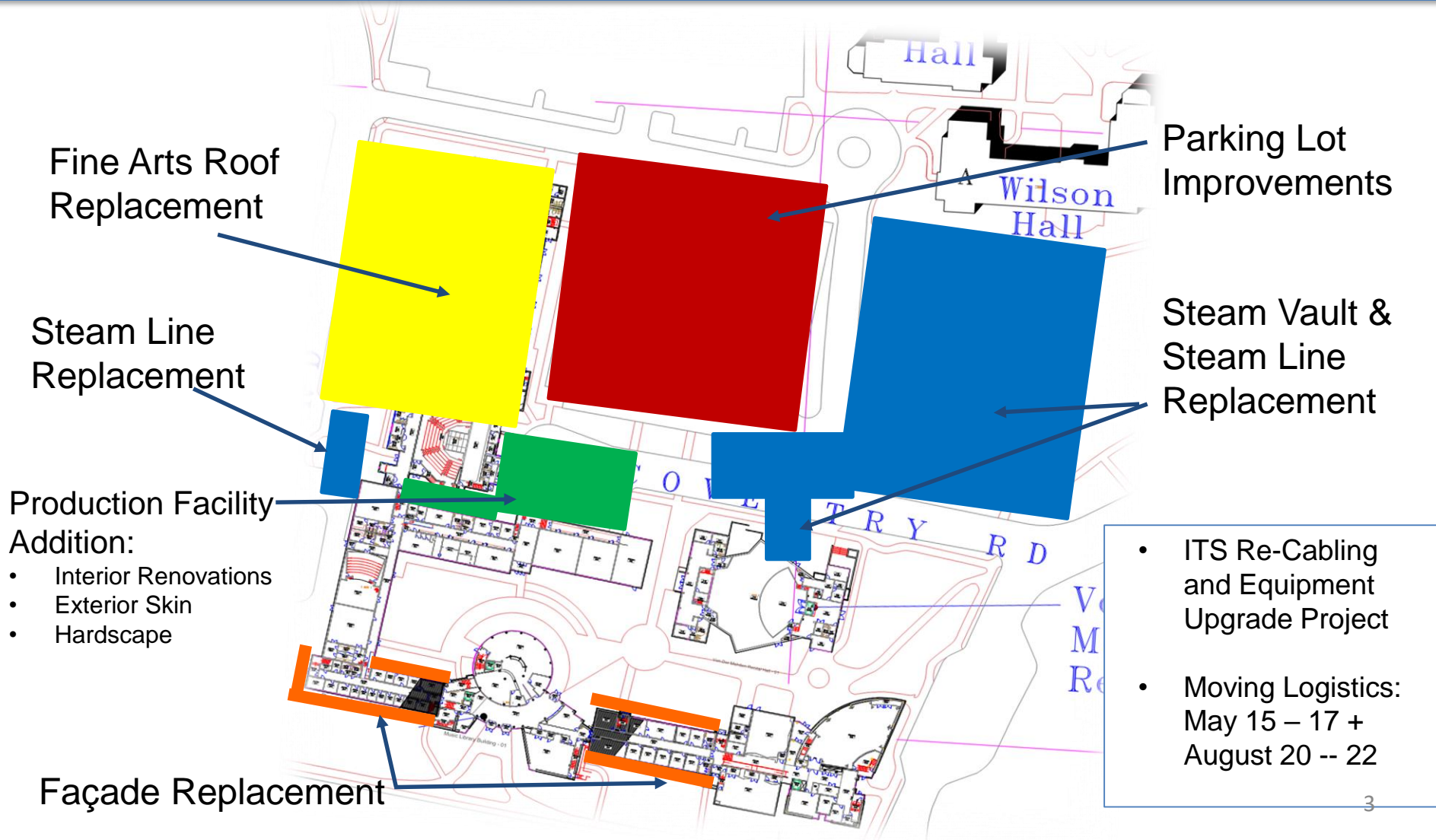
Drama/Music Building Renovation Upgrades (rooms on west side of corridor) – **Ongoing**

Moving logistics prep work for summer projects – **Ongoing**

Southside façade and window replacement – **Complete**

# SFA Capital Project - Overview

## Summer 2019 (May 20 – August 22)

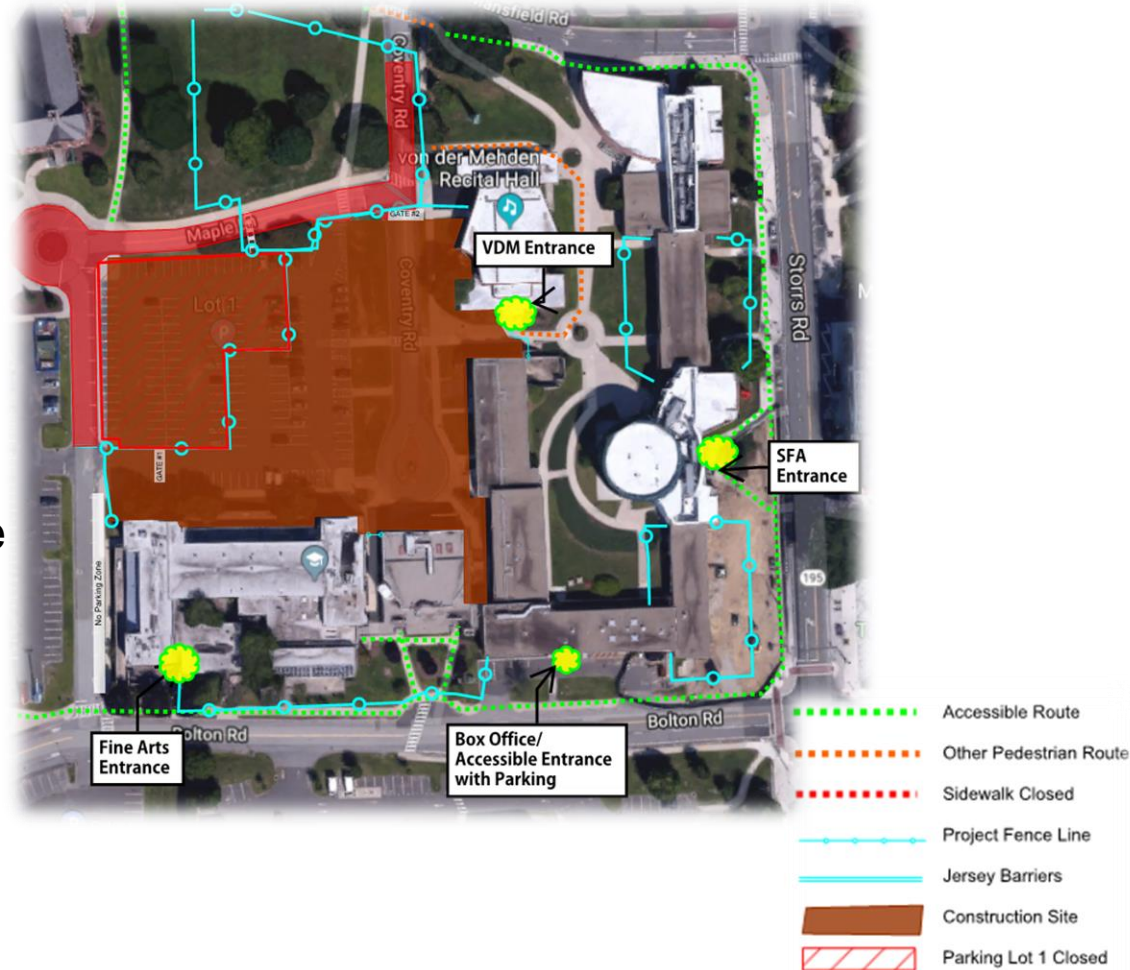


# SFA Capital Project - Logistics

## Summer 2019

**May 15<sup>th</sup> – August 22<sup>nd</sup>**

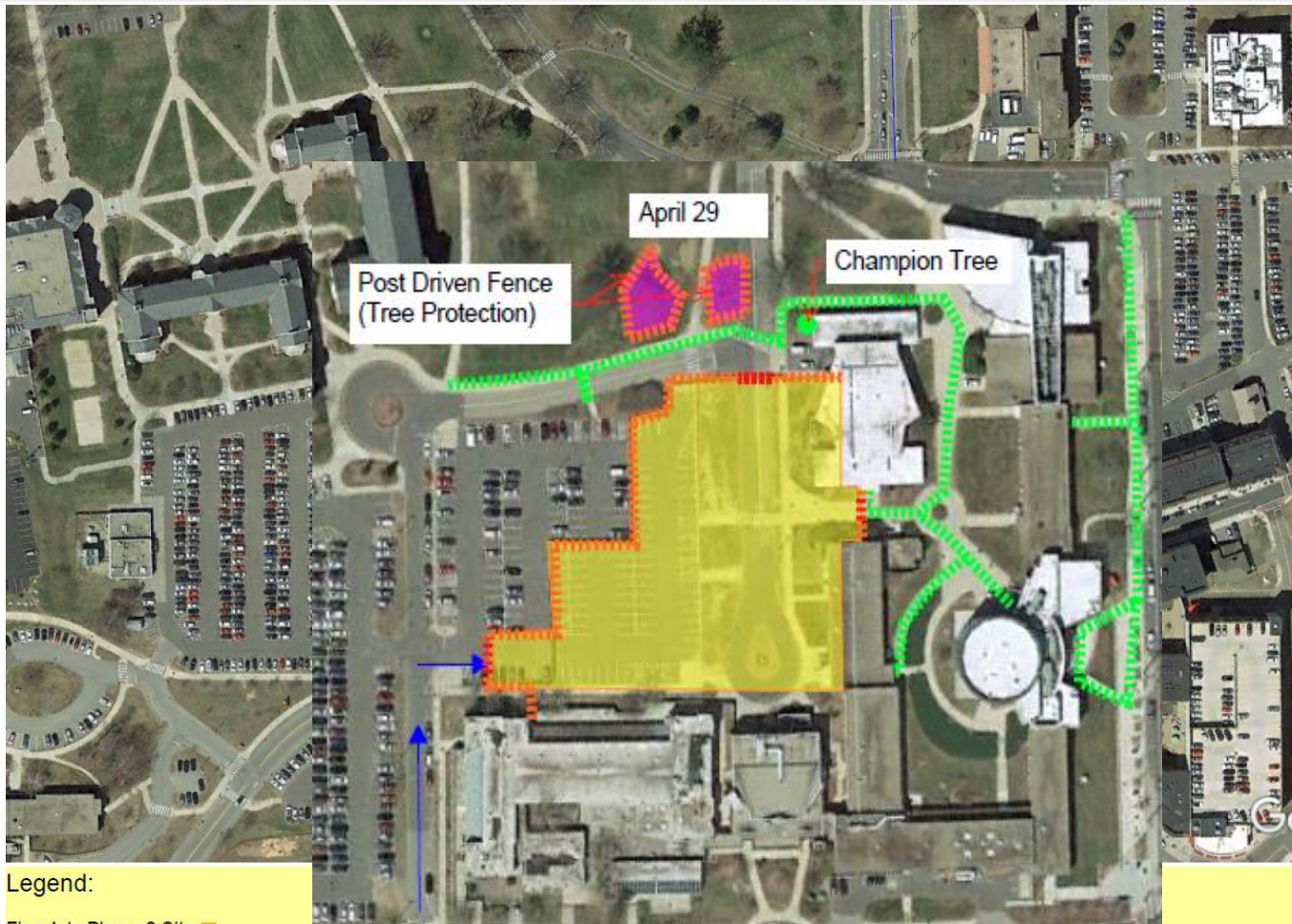
- Moving and swing space relocations (*as necessary*)
- Temporary Road Closures
  - Coventry & Maple Lane
- Temporary Parking Lot Closure
- Box Office Entrance Relocation
- Noise/Mechanical Disruption
  - Facades
  - Art Building Roof
- Network Connectivity Disruption



# SFA Capital Project - Logistics

## Summer 2019

Fine Arts  
Logistics:  
4/29/19 - 5/12/19



### Legend:

- |  |  |
|--|--|
| Fine Arts Phase 2 Site: <span style="color: yellow;">■</span>                        | Pedestrian Route: <span style="color: green;">- - - - -</span>     |
| Fine Arts Roof: <span style="color: red;">■</span>                                   | Delivery Route: <span style="color: blue;">→</span>                |
| Southeast Campus Infrastructure Improvements: <span style="color: magenta;">■</span> | Gate: <span style="color: red;">- · - · -</span>                   |
| Building D/E Facade Renovations: <span style="color: cyan;">■</span>                 | Temp/Jersey Barrier: <span style="color: yellow;">- · - · -</span> |
|  | Fence: <span style="color: orange;">- · - · -</span>               |

# SFA Capital Project - Logistics

## Summer 2019



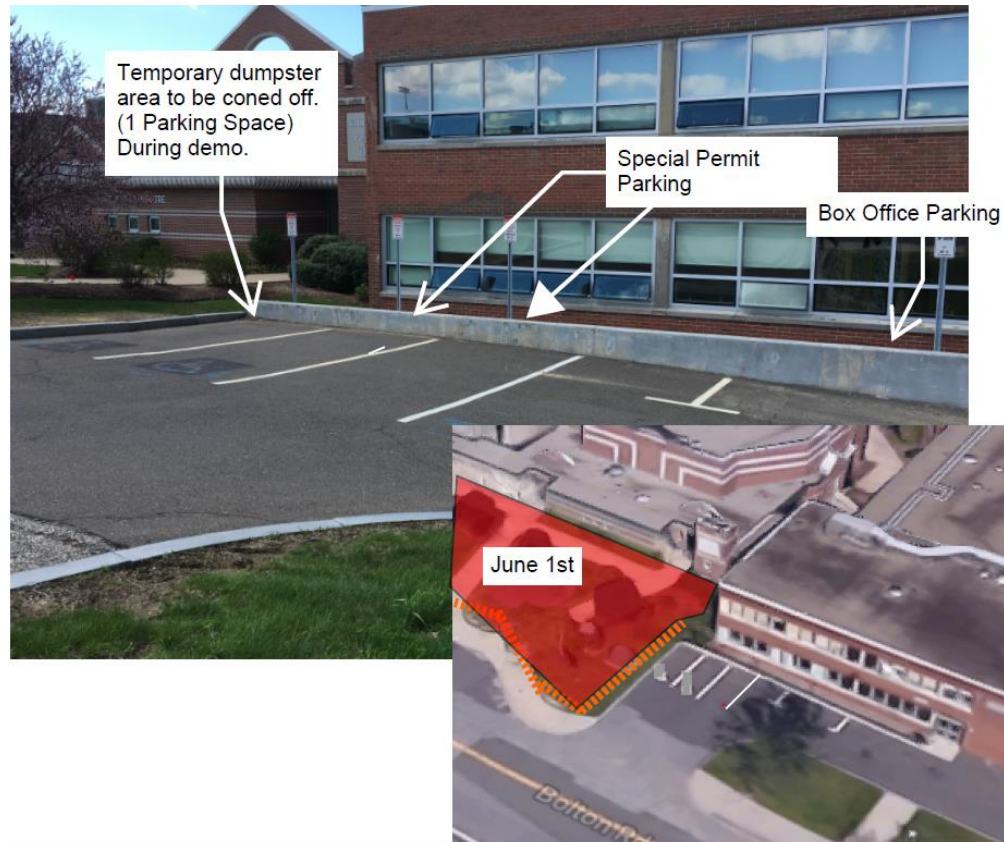
Fine Arts  
Logistics:  
5/13/19-8/16/19

### Legend:

- |   |  |
|---|--|
| Fine Arts Phase 2 Site: <span style="color: yellow;">■</span>                       | Pedestrian Route: <span style="color: green;">- - - - -</span>     |
| Fine Arts Roof: <span style="color: red;">■</span>                                  | Delivery Route: <span style="color: blue;">→</span>                |
| Southeast Campus Infrastructure Improvements: <span style="color: purple;">■</span> | Gate: <span style="color: red;">- - - - -</span>                   |
| Building D/E Facade Renovations: <span style="color: blue;">■</span>                | Temp/Jersey Barrier: <span style="color: yellow;">- - - - -</span> |








# SFA Capital Project - Logistics

## Summer 2019



South Area:  
 Box Office  
 Parking  
 Logistics  
 6/1/19-8/22/19

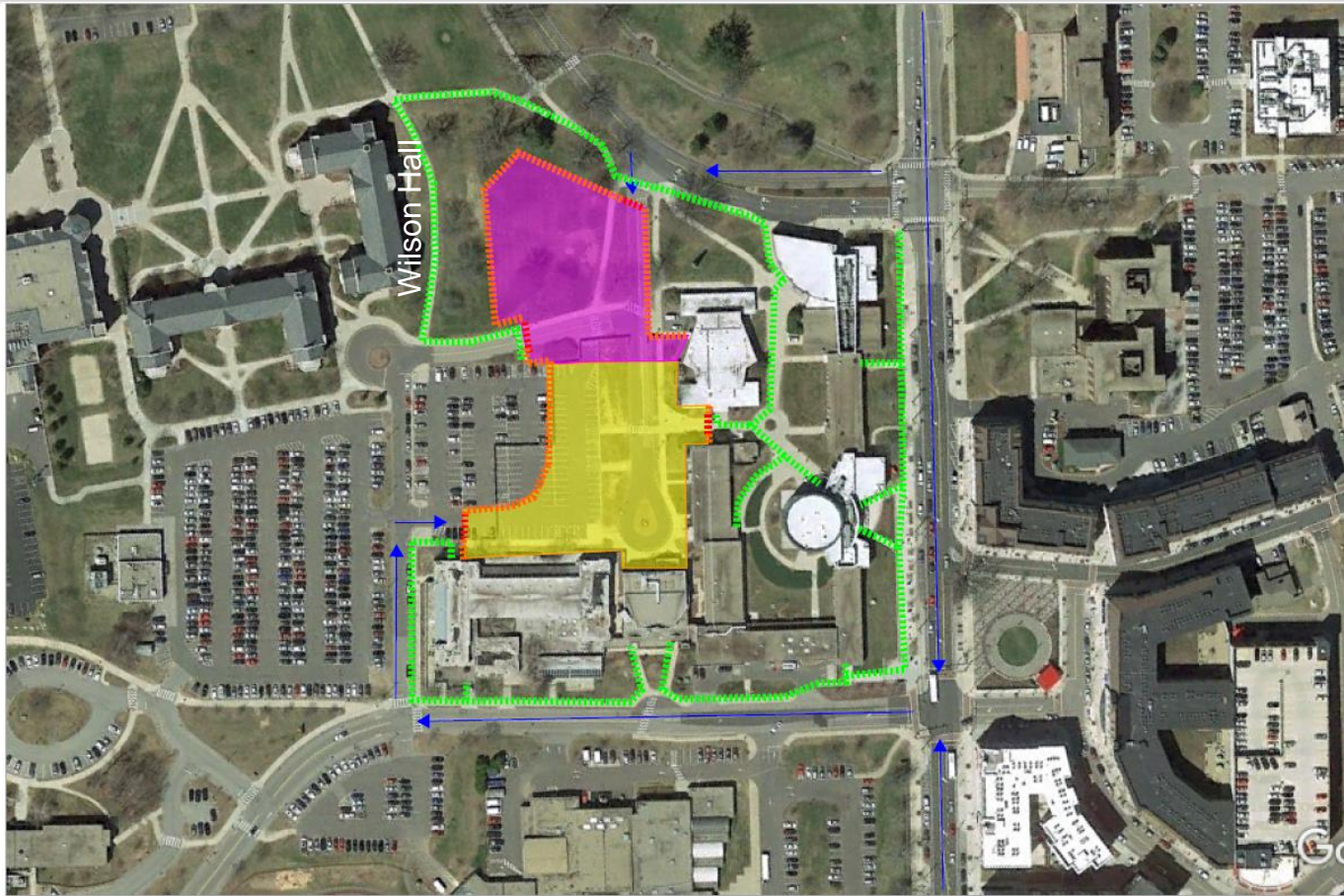
### Legend:

- |              |   |               |   |             |   |
|--------------|---|---------------|---|-------------|---|
| Fence:       |  | Dumpsters:    |  | Tree Prot.: |  |
| Gate:        |  | Porta-lets:   |  |             |   |
| Truck Route: |  | Storage Area: |  |             |   |



# SFA Capital Project - Logistics

## Fall 2019



Fine Arts  
Logistics:  
8/23/19-9/15/19

### Legend:

Fine Arts Phase 2 Site: ■

Southeast Campus Infrastructure Improvements: ■

Pedestrian Route: ⋯

Delivery Route: →

Gate: ⋯

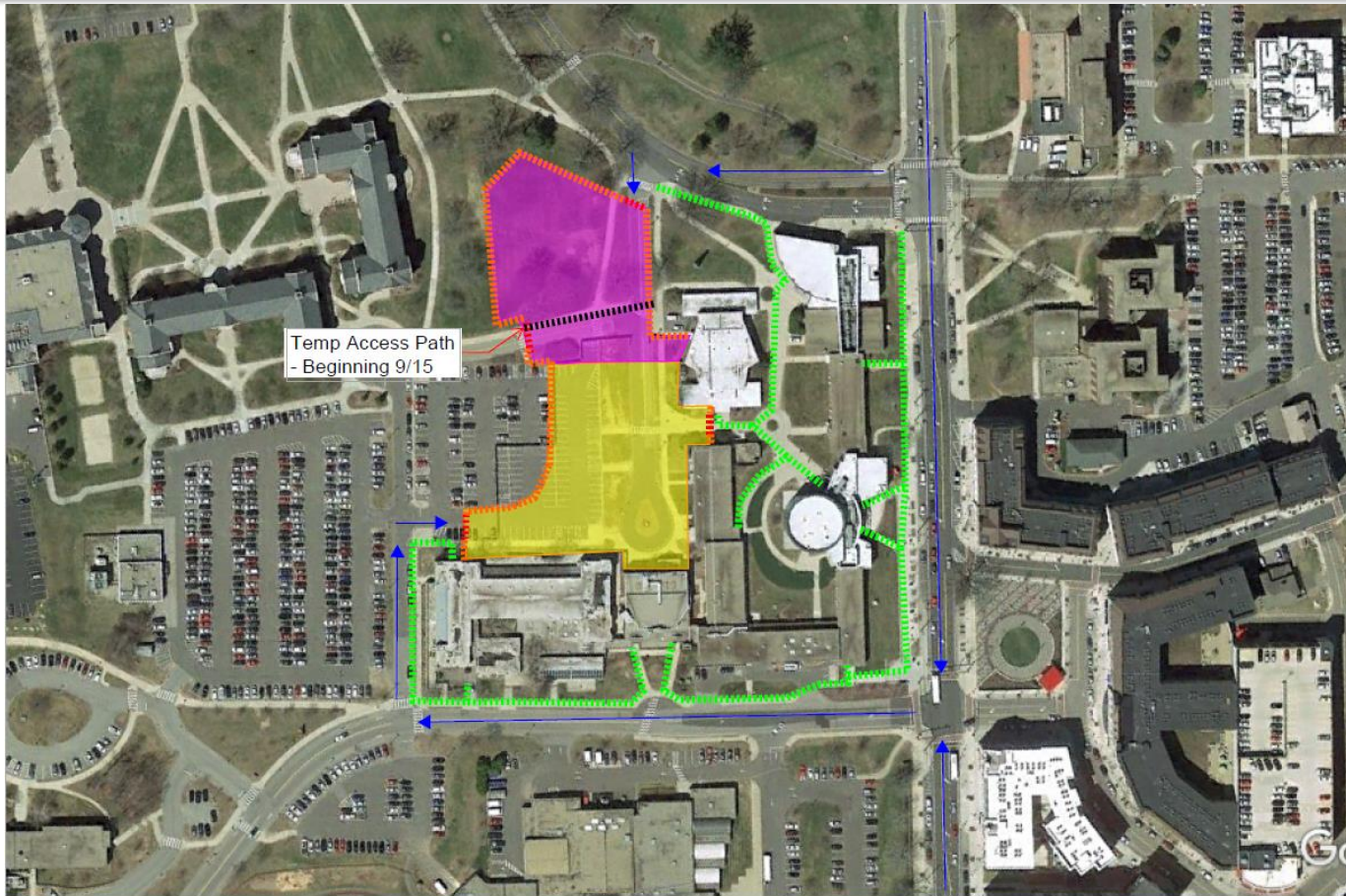
Fence: ⋯





# SFA Capital Project - Logistics

## Fall 2019



Fine Arts  
Logistics:  
9/16/19-11/29/19

\*Expect Lot 1 closed for paving week of 11/25\*

### Legend:

Fine Arts Phase 2 Site: ■  
Southeast Campus Infrastructure Improvements: ■

Pedestrian Route: ⋯  
Delivery Route: →  
Gate: - - -  
Fence: - - -



# SFA Capital Project – Wrap-Up

UConn School of Fine Arts is pleased to present  
the following video presentation:

Fine Arts Phase II Capital Project: Theatre  
Production Facility + Entryway  
Opening in 2020!

<https://www.youtube.com/watch?v=j3iqk-cXC98&feature=youtu.be>