

SFA Capital Project Facility Updates

Status as of 08/21/19

SFA Capital Projects – Project Status – August 23



SFA Capital Projects – Project Status – Fall 2019

Steam Replacement Project: Ongoing

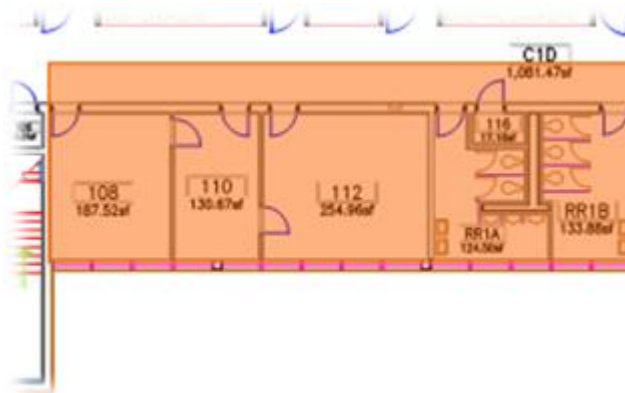
- Landscape (in front of Nafe Katter) Complete by Sept. 7th
- North side (within fence at SE Campus Green)
Complete by Dec. 1st
Steam Activation by October 18th

New Production Facility: Ongoing

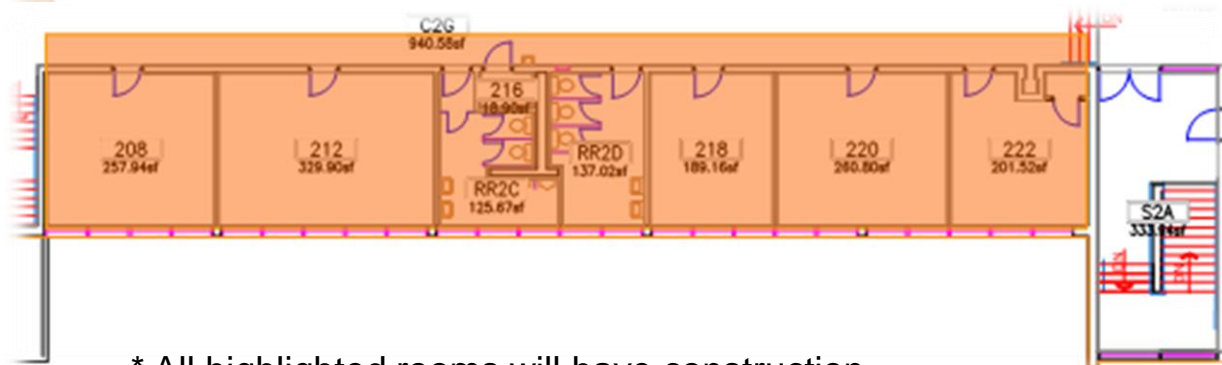
- Roof Installation
- Framing and Drywall
- Mechanical and Electrical Installations
- Fire Protection and Plumbing Installations
- Exterior Terracotta and Roman Brick
- Stair Installations
- Ceiling Soffit Framing
- Substantial Completion: January 31, 2020

SFA Capital Projects – Project Status – Fall 2019

Drama/Music Building Upgrades: Ongoing



- Construction through January 10th for the 1st and 2nd floors of Drama Music West.

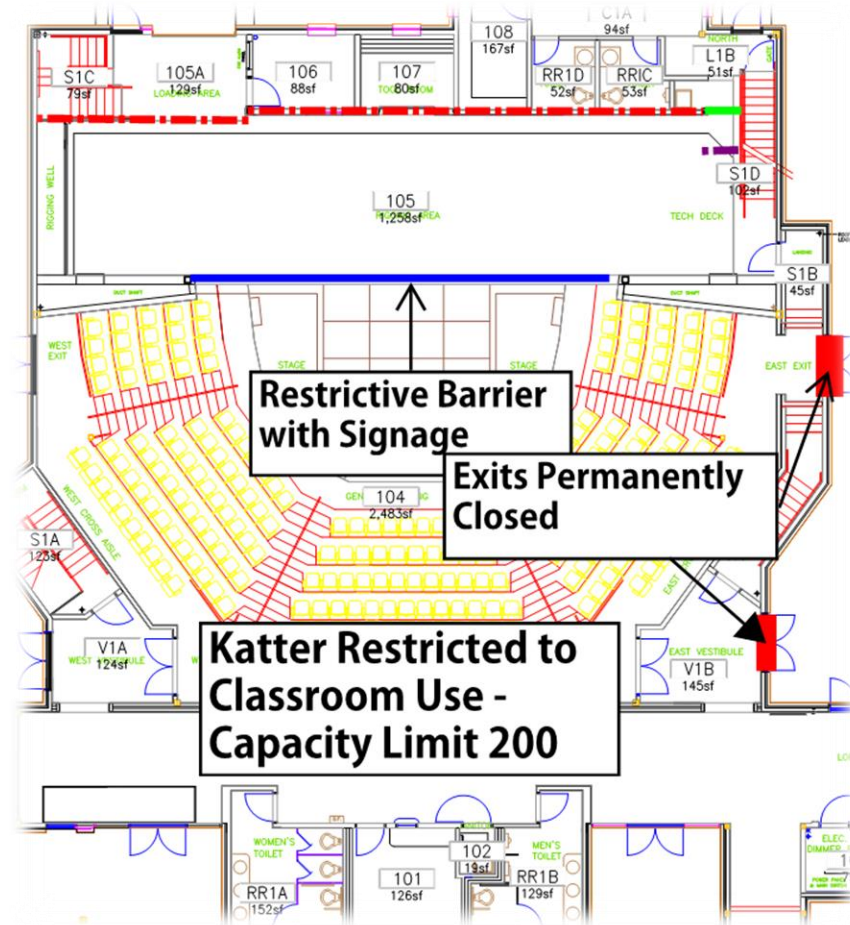


* All highlighted rooms will have construction

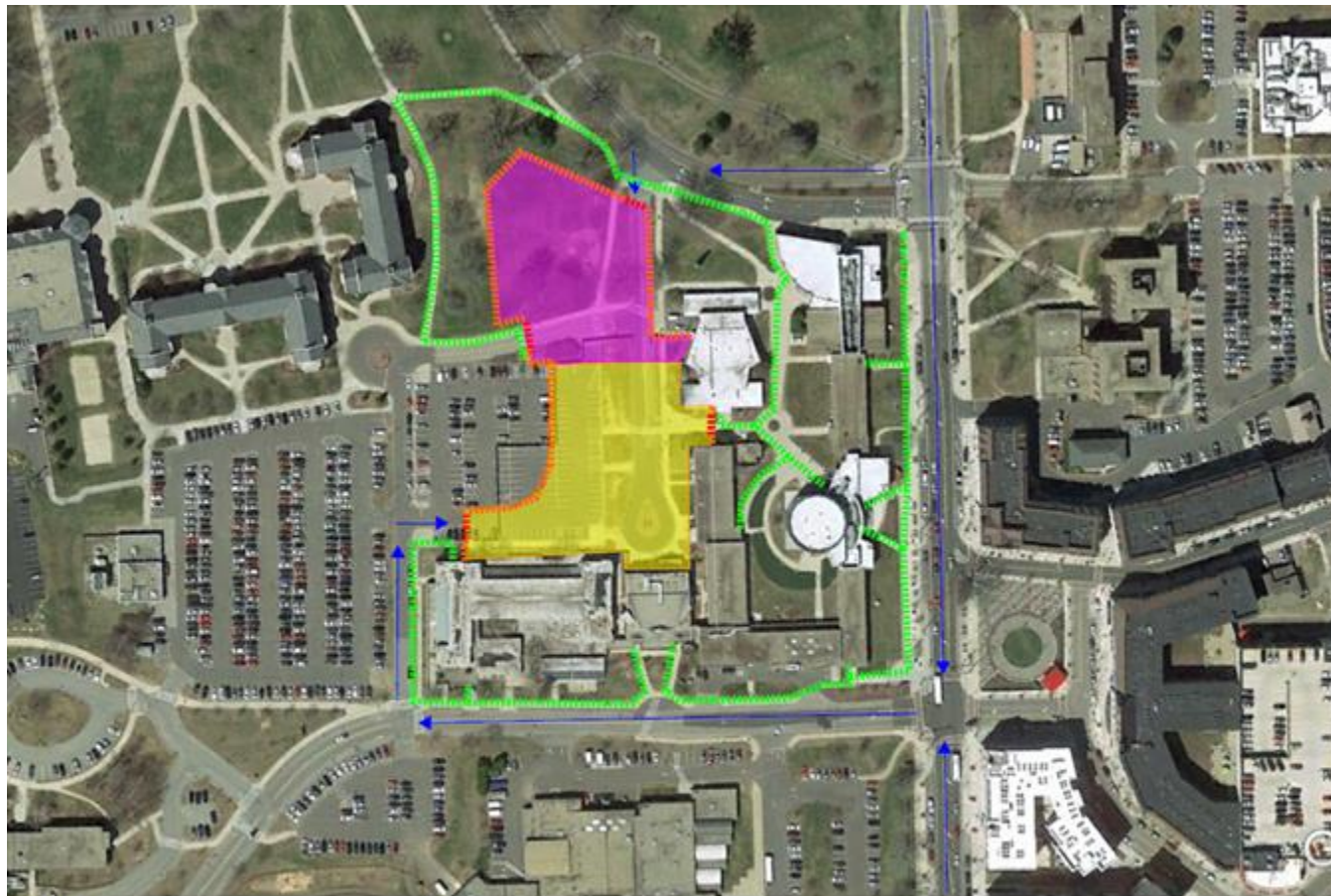
SFA Capital Projects – Project Status – Fall 2019

Nafe Katter Theatre Construction: Ongoing

- Construction impact remains unchanged thru January 2020



SFA Capital Projects – Logistics – Fall 2019



Legend:

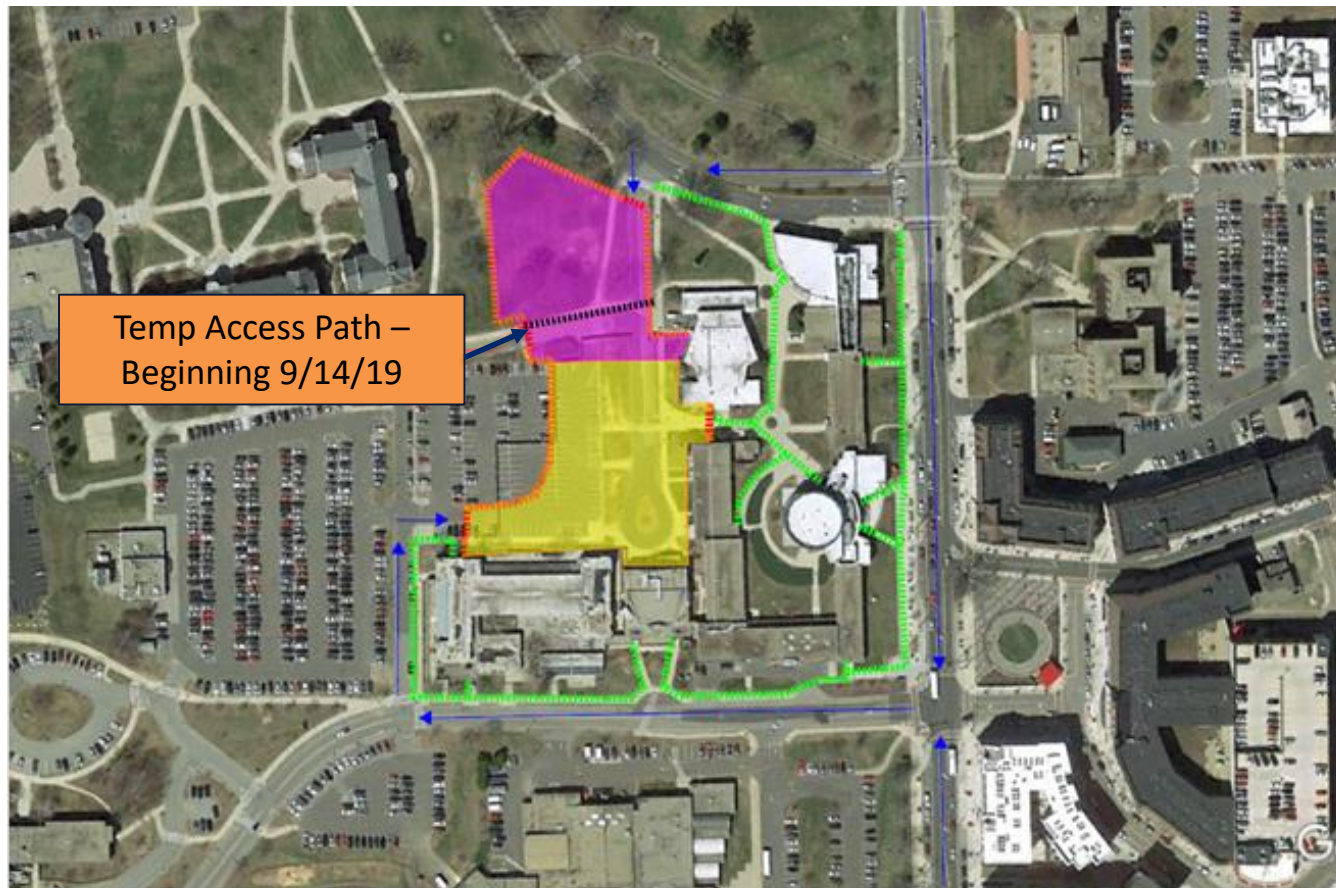
Fine Arts Phase 2 Site:
Southeast Campus Infrastructure Improvements:

Pedestrian Route: - - - - -
Delivery Route: →
Gate: - - - - -
Fence: - - - - -

Fine Arts Logistics:
8/23/19 – 9/13/19

- Southeast Campus Closure
- Coventry & Maple Road Closures

SFA Capital Projects – Logistics – Fall 2019



Fine Arts Logistics:
9/14/19 – 12/01/19

Includes:

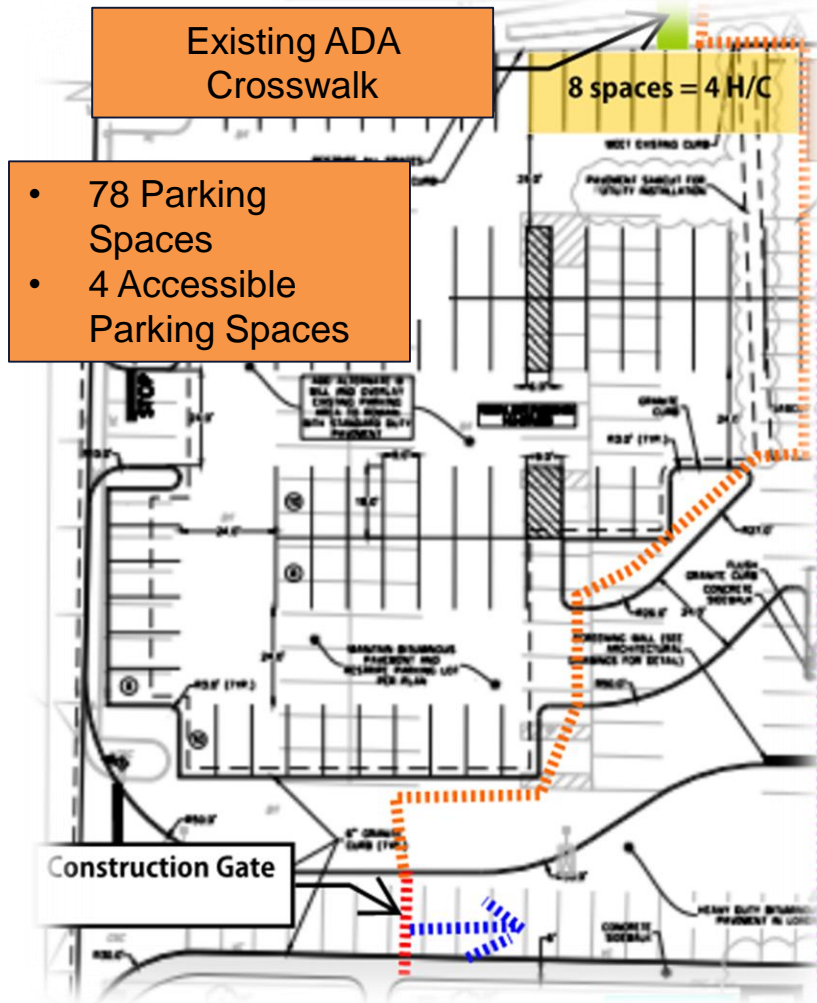
- Temporary Walkway from Parking Lot to VDM (opens Sept 14th)
- Southeast Campus Closure
- Coventry & Maple Road Closures

Legend:

Fine Arts Phase 2 Site:
Southeast Campus Infrastructure Improvements:

Pedestrian Route: -----
Delivery Route: →
Gate: -----
Fence: -----

SFA Capital Projects – Logistics - Fall 2019



Fine Arts - Area 1 Parking Lot –

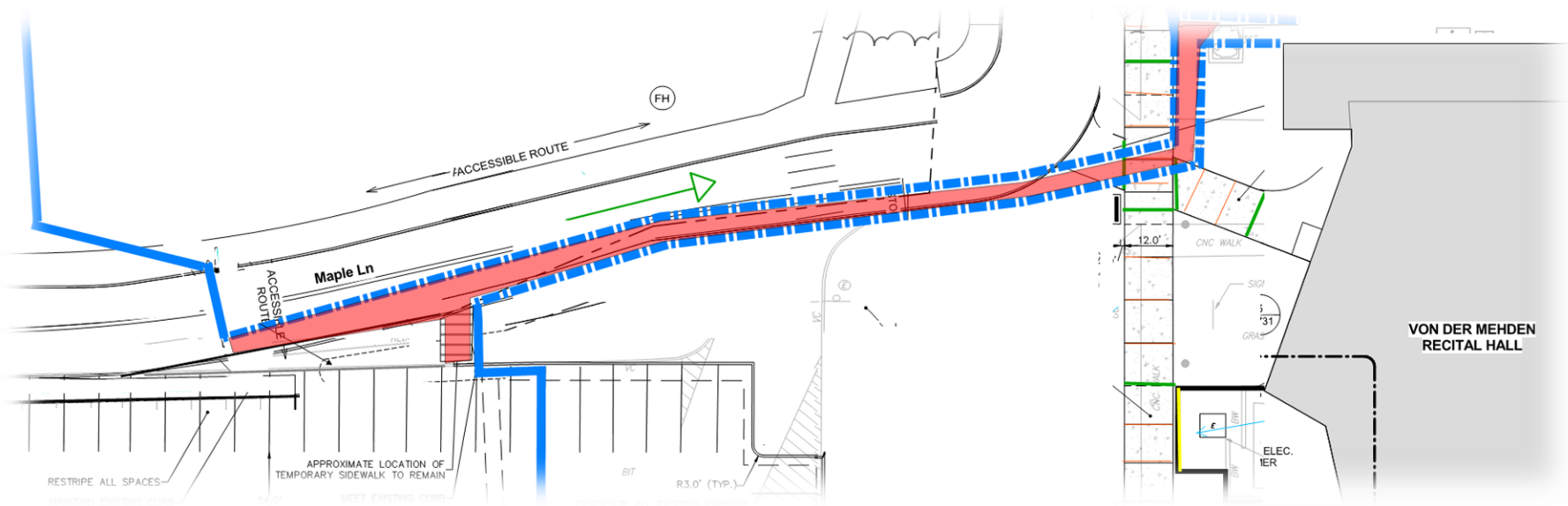
- 8/23/19 – 12/01/19

Fence: ■■■■■■■■

SFA Capital Projects – Logistics – Fall 2019

Temporary Access Path –

- Lighted, fenced path from Fine Arts - Area 1 Parking Lot to vdM
- Effective 9/14/19 – 12/01/19



SFA Capital Projects – Wrap-Up

UConn School of Fine Arts is pleased to present
the following video presentation:

Fine Arts Phase II Capital Project: Theatre
Production Facility + Entryway
Opening in 2020!

<https://www.youtube.com/watch?v=j3iqk-cXC98&feature=youtu.be>